



Project PAVE

## 2010 Project PAVE Transformations Scholarship Application

Project PAVE (Promoting Alternatives to Violence through Education) is a non-profit organization that empowers youth to end the cycle of relationship violence. Project PAVE provides prevention education and counseling services to children, youth and families that have been impacted by relationship violence such as child and sexual abuse, domestic violence, and teen dating violence. [www.projectpave.org](http://www.projectpave.org)

Since 1996, Project PAVE has awarded **scholarships to graduating seniors or GED candidates** (21 years of age and younger) to pursue post-high school education. Recipients are chosen based on personal achievement and demonstration of resilience over an emotionally, physically, or sexually violent experience. Resilience is defined as the ability to overcome or bounce back from illness, change, or misfortune. The average amount of the scholarship is \$2,500 - \$3,000. Approximately ten scholarships will be awarded.

***\*This scholarship is not academically or financially based. It is awarded on the basis of triumph over personal experience(s) with relationship violence.***



**APPLICATION DEADLINE: FEBRUARY 1, 2010**

### **Applicant Information Form** *(Fill out requested info and attach as a cover sheet to your essay)*

---

\_\_\_\_\_  
Full Name (First, Last)

\_\_\_\_\_  
Nickname or preferred first name

\_\_\_\_\_  
Street Address/Apt #

\_\_\_\_\_  
City, State, & Zip Code

\_\_\_\_\_  
Primary Phone # (Home/Cell/Work)

\_\_\_\_\_  
Alternate Phone # (Home/Cell/Work)

\_\_\_\_\_  
E-mail Address

\_\_\_\_\_  
Best Way & Time(s) to Contact

\_\_\_\_\_  
School/Grade Level

\_\_\_\_\_  
Date of Birth

\_\_\_\_\_  
Referring Person's Name

\_\_\_\_\_  
Relationship to applicant

## Considerations

If you are chosen to receive the scholarship, you will be expected to:

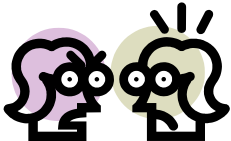
- Attend several meetings at Project PAVE where you will meet other scholarship winners
- Learn how to access your scholarship funds and other important information
- Attend an informational session on the topic of healthy relationships
- Attend a guest luncheon event to honor the scholarship recipients on May 4, 2010
- Participate in a follow-up discussion to share your input about the experience

It's also important for you to understand that...

- Your story will be shared in the luncheon program in written form.
- Some of you may choose to share your story publically at the luncheon event.
- Your photograph and story about the event will be published in the local press.
- You and your parent(s)/guardian will need to sign a detailed consent form in order to participate. If you are 18 years or older, you may sign the consent form yourself.
- Because Project PAVE provides counseling services to children and youth, we are mandated to report present and past abuse and neglect to social services.

## What is relationship violence?

Relationship violence has many different faces. It can occur within a family, within a romantic relationship, or within other interpersonal relationships like between peers at school. Relationship violence can come in the form of: bullying, child abuse, domestic violence, physical assault and abuse, rape and sexual abuse and/or teen dating violence. It happens to young children, teens, adults or elderly people. It happens to people from diverse ethnic, racial and economic backgrounds.



*How do I know if I have experienced relationship violence?* Talking to a trusted adult, like a teacher or counselor, is one way to figure out if your experience is/was relationship violence. It is a good idea to speak with someone who is not involved in the situation to get a neutral view of your experience. You can also speak to one of the staff members at Project PAVE. They are trained about the signs of relationship violence and are more than willing to help you.

## What is resilience?

If you choose to apply for the scholarship you will be asked to write an essay sharing your experience with relationship violence and your ability to overcome or bounce back from this difficulty. Resiliency also may mean that you:

- are involved as a role model in your family, school or community
- are growing and have positive plans for your future



## Part One: Essay



### Essay Information & Instructions

To be considered for a scholarship, you must submit the following:

- Completed applicant information form - see pg. 1
- Typed essay outlining your triumph over relationship violence
- Length of essay no longer than 3 - 4 typed pages (7 to 10 paragraphs)
- 2 letters of recommendation (1 from a teacher or school personnel)- see pg. 2
- Applications are due by February 1st, 2010

### Essay Criteria

Your essay should answer the following questions:

1. Tell the story about relationship violence in your life. What impact did this experience with relationship violence have on you? (2 paragraphs)
2. What have you done to overcome or demonstrate resilience over your experience with relationship violence? How have you dealt with your experience? What makes you feel strong and able to move forward with your life? (2-3 paragraphs)
3. How have you have been a role model for others? How can others learn from how you dealt with your experience with relationship violence? (1-2 paragraphs)
4. What are your personal goals and objectives for the future? What is your motivation for achieving those goals and objectives? (1-2 paragraphs)
5. Are there any other unique circumstances that are critical to understanding your situation and experience? (1 paragraph)

### Keep in Mind

While it is important to follow the instructions, it's also important for you to personalize this essay and make it your own. Your experience and the way you chose to overcome is unique to you. Your application will be reviewed by a panel of evaluators made up of Project PAVE staff, board members, community members, and/or previous scholarship winners. Applicants who score highest on the essay will move on to the interview phase.

### Delivery Instructions

The best way to get your application and essay to PAVE is by **mail or hand delivery**.

- Mail or hand delivery: Project PAVE  
Attn: Eryn Hoerig, Development Assistant  
2051 York Street  
Denver, CO 80205  
303-322-2382
- E-mail: [ehoerig@projectpave.org](mailto:ehoerig@projectpave.org)
- Fax: to the attention of Eryn Hoerig at fax #: (303) 322-0032
- **Application deadline is February 1, 2010**

## **Part Two:** Letters of Recommendation

It is important to request that one of your letters come from a teacher, school counselor or principal. The second letter may come from someone that can write meaningfully about your ability to be a role model, to show resiliency and to set goals for your future. Only **two letters of recommendation are required**, though you are welcome to submit additional letters.



Here are some steps to assist you with the process:

- After you ask individuals to write letters on your behalf, photocopy page 5 of this application packet and write your name on the blank line.
- Give a copy of this letter (page 5) to the people writing your letter. This will provide directions for how to write the letter and where to send it.
- **Be sure to follow up with each person to confirm they send in the letter before Feb. 1<sup>st</sup>, 2010.**
- You have the option of collecting your letters and sending them with your application packet, or requesting that your recommendation letters be sent directly to Project PAVE, by mail or fax.

## **Part Three:** The Interview

The interview is an opportunity for you to verbally communicate your personal journey to overcome the impact of relationship violence in your life. This is an opportunity for you to expand on the information you provide in your essay.

- Interviews will be conducted in March of 2010 at the Project PAVE offices in the City Park neighborhood - 2051 York Street, Denver, CO 80205.
- The length of the interview will be approximately 15-20 minutes. When you arrive you will receive a list of questions the panel will use during your interview. PAVE staff will be available before and after the interview to answer questions and offer support.
- Feel free to bring a trusted friend or adult to the interview with you or come on your own. Please do whatever makes you feel comfortable. If you choose to bring someone, this person can wait for you in the waiting room or come in to the interview with you.
- It is advised that you do not bring anyone who was involved in your experience with relationship violence, as this could compromise your ability to speak freely.
- The interview panel will be made up of community leaders, Project PAVE staff and board members, and previous scholarship winners. Please understand that Project PAVE deeply respects your feelings and confidentiality. All efforts will be made to support you through this process and maintain your confidentiality.





*Project PAVE*

## **2010 Project PAVE Transformations Scholarship**

Dear Applicant Supporter,

You have been requested by \_\_\_\_\_ to submit a letter of recommendation on his/her behalf for the Project PAVE Transformations Scholarship.

This scholarship may be used for post-high school education. It is not academically or financially based. It is awarded on the basis of an applicant's struggle with, and triumph over, personal experience with relationship violence.

Project PAVE (Promoting Alternatives to Violence through Education) is a non-profit organization that empowers youth to end the cycle of relationship violence. Project PAVE provides prevention education and counseling services to children, youth and families that have been impacted by relationship violence such as child and sexual abuse, domestic violence, and teen dating violence. [www.projectpave.org](http://www.projectpave.org)

Applicants are encouraged to seek recommendations from individuals in positions of authority (such as teachers, counselors, principals), who have personal knowledge of the applicant, and who can address the above areas in a meaningful manner.

Each letter of recommendation should include the following:

- Applicant's resiliency in dealing with the relationship violence experience(s)
- How applicant has been, or is becoming, a role model for others
- Applicant's motivation to achieve personal goals and objectives

We appreciate your contribution to this important opportunity to empower youth to end the cycle of relationship violence. Don't hesitate to call with any questions you may have or interest in becoming more involved in this program.

**Delivery Instructions:** You may return your signed letter directly to the applicant for him/her to submit. Or, you may submit your letter separately. Please remember to **sign your letter** and if you fax it in, attach a cover sheet with the applicant's first and last name along with your contact information. The deadline for submission is **February 1st, 2010**.

Send letters to the following address:

**Project PAVE  
Attn: Eryn Hoerig  
2051 York Street  
Denver, CO 80205**

**Questions?**

Contact Eryn Hoerig  
303-322-2382  
ehoerig@projectpave.org

Fax letters to: (303) 322-0032